

## PLUG-IN CONNECTORS



in partnership with



**ALFAGOMMA**

## // PLUG-IN CONNECTOR

ALFAGOMMA, in order to improve customer's effectiveness in hydraulic assembly installations, with the valuable collaboration of CMatic, has engineered and produced an innovative hydraulic connector for quick and smart connections: no wrench, no tightening; only a safe and easy "click".

The operator does not even have to carry on-board hardware. Plug-in Connector reduces the exposure

to under pressure machinery's components while increasing safety and speeding up assembly procedures.

The Plug-in Connector is fully compatible with all hydraulic applications and represents an effective improvement of operations in connecting valves, filters, pumps, motors and other valuable components.

Plug-in Connector is the answer to reduced manifold surfaces and difficult assembly installations.

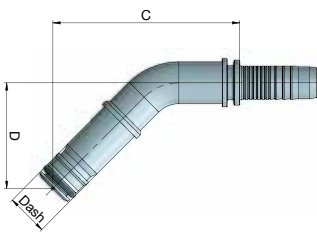
Quick, Easy and Safe, Plug-in Connector has been thoroughly tested for 1 Million cycles at 5000 psi (350 bar).

Thanks to the compact integrated socket, there's no need of additional hydraulic components or adapters.

- ▲ TIME AND COST SAVING FOR ASSEMBLING AND INSTALLATION
- ▲ VERY COMPACT DESIGN, MINIMUM SPACE REQUIRED
- ▲ MAINTENANCE AND TESTING DOWN-TIME REDUCTION
- ▲ SAFETY STANDARDS AND RELIABILITY IMPROVEMENT

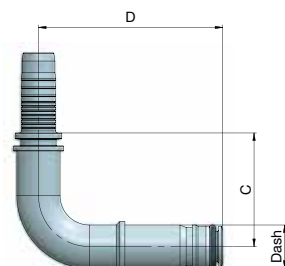
## // HOSE CONNECTION

### 45° Elbow



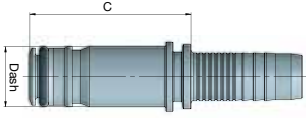
Part number	Hose ID inch	Hose ID mm	Dash	Plug-in DN Dash	D Drop mm	C CUT-OFF mm
H1213N40-040400	1/4	6,2	04	04	37,6	62,2
H1213N40-060600	3/8	9,5	06	06	40,3	67,6
H1213N40-080800	1/2	12,9	08	08	43,0	76,0
H1213N40-121200	3/4	19	12	12	56,4	97,5

### 90° Elbow



Part number	Hose ID inch	Hose ID mm	Dash	Plug-in DN Dash	D Drop mm	C CUT-OFF mm
H1213N90-040400	1/4	6,2	04	04	62	33,3
H1213N90-060600	3/8	9,5	06	06	67,5	37,9
H1213N90-080800	1/2	12,9	08	08	72,5	44,7
H1213N90-121200	3/4	19	12	12	98,5	59,8

## Straight

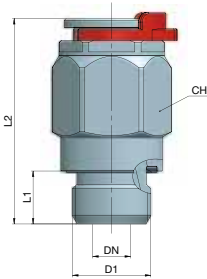


Part number	Hose ID inch	Hose ID mm	Dash	Plug-in DN Dash	C CUT-OFF mm
H1213N10-040400	1/4	6,2	04	04	38,2
H1213N10-060600	3/8	9,5	06	06	40,3
H1213N10-080800	1/2	12,9	08	08	45,6
H1213N10-121200	3/4	19	12	12	52,1

## // PLUG-IN CONNECTOR

### Straight puch-in fittings, BSPP thread

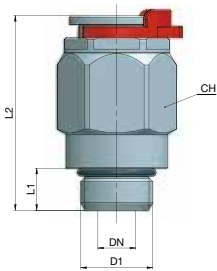
BSPP (ISO 1179-2)



Part number	Plug-in DN Dash	D1 Thread in-TPI	D1 Thread Dash	L1 mm	L2 mm	CH mm
R1A3N3106I-0404	04	1/4-18	04	12	46	20
R1A3N3106I-0606	06	3/8-18	06	12	48	24
R1A3N3106I-0808	08	1/2-14	08	14	54,5	28
R1A3N3106I-1212	12	3/4-14	12	16	61,5	38

### Straight puch-in fittings, UNF thread

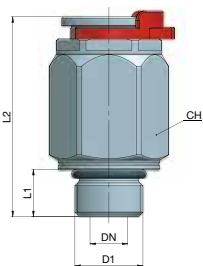
SAE Oring Boss – UNF Stud (ISO 11926-3)



Part number	Plug-in DN Dash	D1 Thread in-TPI	D1 Thread Dash	L1 mm	L2 mm	CH mm
R1A3N31305-0404	04	7/16-20	04	9	43	20
R1A3N31305-0606	06	9/16-18	06	10	46	24
R1A3N31305-0808	08	3/4-16	08	11	51,5	28
R1A3N31305-1212	12	1 1/16-12	12	15	60,5	38

### Straight puch-in fittings, metric

Metric Stud (ISO 6149-3)

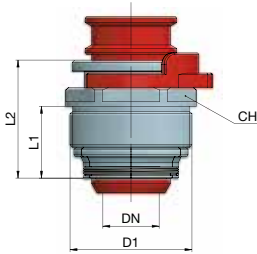


Part number	Plug-in DN Dash	D1 Thread	D1 Thread Dash	L1 mm	L2 mm	CH mm
R1A3N31525-0414	04	M14x1,5	14	11	45	20
R1A3N31525-0616	06	M16x1,5	16	11,5	47,5	24
R1A3N31525-0818	08	M18x1,5	18	12,5	53	28
R1A3N31525-1222	12	M22x1,5	22	13	58,5	38

## // PLUG-IN CARTRIDGE

The Plug-in cartridge is the right solution in case of lack of space, the compact design allows for the assembly of the cartridge in such a way that

it almost completely disappears once assembled in its own body (manifolds/valves etc).

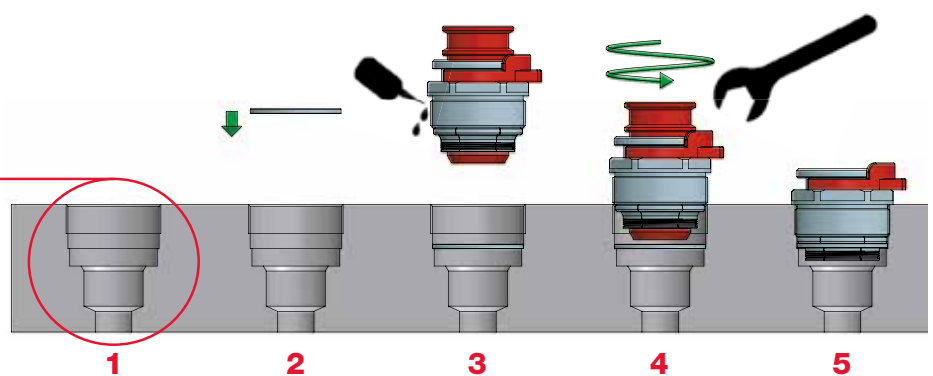
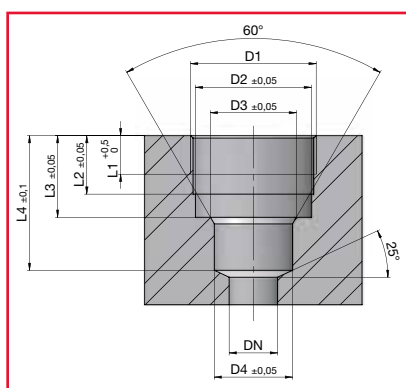


Part number	Plug-in DN Dash	D1 Thread	L1 mm	L2 mm	CH mm
R1YACMTC-041800	04	M18x1	13,2	21,7	17
R1YACMTC-062200	06	M22x1	13,9	23,1	21
R1YACMTC-082600	08	M26x1	15,3	25,1	25
R1YACMTC-123400	12	M34x1	18,2	28,2	32

## // CARTRIDGE SEAT DRILLING PLAN

Plug-in DN Dash	D1 Thread	D2 mm	D3 mm	L1 mm	L2 mm	L3 mm	L4 mm
04	M18x1	16,2	9,4	8	10,6	14,4	23,1
06	M22x1	20	12,25	8,5	11	15,3	24,3
08	M26x1	24	16,2	9	12,1	16,9	27,9
12	M34x1	32,2	23	12	15	20,6	32,6

- 1 → Machine the cartridge seating according to the drawing stated below.
- 2 → Place at the bottom of the seating the distance ring provided with the cartridge, as shown in the picture.
- 3 → Apply a light layer of threadlocking sealant on the cartridge thread.
- 4 → Screw the cartridge all the way into its seating until it bottoms.



**HEADQUARTER**  
**Alfagomma SpA**  
 Via Torri Bianche 1  
 20871 Vimercate (MB) Italy  
 marketing@alfagomma.com  
 www.alfagomma.com