

ALFAGOMMA

Developed by

sit ef

METALLIC EXPANSION JOINTS FLEXIBLE METAL HOSE AND ACCESSORIES



// THE COMPANY

Alfagomma, a global leader in the design, production and distribution of hydraulic and industrial fluid handling systems, **introduces its range of metallic expansion joints and flexible metal hose.**

Customized solutions and a commitment to continuous research and development supported by an integrated and multi-site quality management system makes Alfagomma the ideal global partner to satisfy customers' needs.

The acquisition of Sitef by the Alfagomma Group in 2016, has resulted in the further development of Sitef's metallic expansion joints and flexible metallic hose range.

Sitef has been operating in the flexible metallic hose market since 1987 and boasts a comprehensive product range that it includes flexible metallic hose for automotive and industrial applications together with the range of expansion joints.

The synergy between Sitef's specific product culture and Alfagomma's high technological innovation ensures excellence in quality and a reliable final product.



Design and dimensions shown may be changed without prior notice

// QUALITY

The quality of SITEF products is the result of careful **selection of material suppliers** combined with advanced **manufacturing technology** and **constant verification** of all process stages.

Internal laboratory facilities and highly specialised **staff offers the ability to perform product and special process testing** for individual components throughout manufacturing.

As standard, **100% of manufactured products undergo general and leak testing** to ensure full compliance with industry standards.

HIGH RELIABILITY AND TOP QUALITY

ISO 9001 quality system certification, PED directive 2014/68/UE and compliance with regulation expressed by the ministerial decree **D.M. 174/2004** are further proof and guarantee of reliability and safety of the finished products.



// METALLIC EXPANSION JOINTS

Sitef designs and manufactures **metallic expansion joints** by hydroforming or mechanical forming methods.

The main goal is to provide top quality **solutions that meet the technical specifications**.

For this reason, the product is designed and customized together with the customer, developed on the basis of the operating conditions and application requirements. All the raw materials used are of absolute quality to guarantee a safe and reliable product.

The common materials used are **321-316-304 stainless steel and special alloys** are non-hardening and suitable for welding, which **guarantees exceptional performance at very high temperatures** with excellent oxidation and corrosion resistance. The choice of multiple or single wall geometries is also perfectly adapted to the specific applications.

The designing process uses applications such as CAD, FEM (Finite Element Analysis) and EJMA calculation software.

All products comply with the design standards: EN 13445, EN 13480, EN 14917, PED 2014/68 / EU, ASME VIII, DIV.I, ASME B31.3, ASME 31.1 and AD 2000 OR EJMA.



Design and dimensions shown may be changed without prior notice



SITEF OFFERS ITS TECHNICAL EXPERTISE FOR:

- // Project Design
- // Applications
- // Pipeline fixed point positioning
- // Installation requirements



Multi-Ply Stainless Steel Axial Expansion Joint with weld-on ends

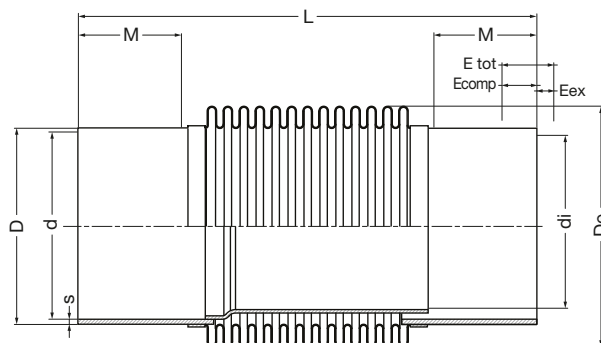
PN 16

STANDARD MATERIALS

Bellows: AISI 321-1.4541

Ends: Carbon Steel

Internal sleeve: AISI 321-1.4541



// CDAM01 WITHOUT INTERNAL SLEEVE

code	DN		E _{tot}	E _{comp}	E _{ext}	Dimensions (mm)						R +/-20%	A
	mm	inch				L	M	D	S	di	De		
CDAM020100001	100	4"	32	21	11	273	60	114,3	3,05	108,2	151	523	137
CDAM020100002	100	4"	43	29	14	304	60	114,3	3,05	108,2	151	523	137
CDAM020125001	125	5"	30	20	10	262	60	141,3	3,40	135,2	175	626	191
CDAM020125002	125	5"	45	30	15	294	60	141,3	3,40	135,2	175	626	191
CDAM020150001	150	6"	36	24	12	269	60	168,3	4,20	159,3	204	749	269
CDAM020150002	150	6"	51	34	17	303	60	168,3	4,20	159,3	204	749	269
CDAM020200001	200	8"	28	19	9	261	60	219,1	4,50	207,1	257	835	441
CDAM020200002	200	8"	49	33	16	312	60	219,1	4,50	207,1	257	835	441
CDAM020250001	250	10"	32	21	11	267	60	273,0	6,30	261,0	300	996	616
CDAM020250002	250	10"	56	37	19	324	60	273,0	6,30	261,0	300	996	616

// CDAMC2 WITH INTERNAL SLEEVE

code	DN		E _{tot}	E _{comp}	E _{ext}	Dimensions (mm)						R +/-20%	A
	mm	inch				L	M	D	S	di	De		
CDAMC20100001	100	4"	32	21	11	273	60	114,3	3,05	97,0	151	523	137
CDAMC20100002	100	4"	43	29	14	304	60	114,3	3,05	97,0	151	523	137
CDAMC20125001	125	5"	30	20	10	262	60	141,3	3,40	123,0	175	626	191
CDAMC20125002	125	5"	45	30	15	294	60	141,3	3,40	123,0	175	626	191
CDAMC20150001	150	6"	36	24	12	269	60	168,3	4,20	149,0	204	749	269
CDAMC20150002	150	6"	51	34	17	303	60	168,3	4,20	149,0	204	749	269
CDAMC20200001	200	8"	28	19	9	261	60	219,1	4,50	197,0	257	835	441
CDAMC20200002	200	8"	49	33	16	312	60	219,1	4,50	197,0	257	835	441
CDAMC20250001	250	10"	32	21	11	267	60	273,0	6,30	249,0	300	996	616
CDAMC20250002	250	10"	56	37	19	324	60	273,0	6,30	249,0	300	996	616

Design and dimensions shown may be changed without prior notice

Multi-Ply Stainless Steel Axial Expansion Joint with UNI flanges

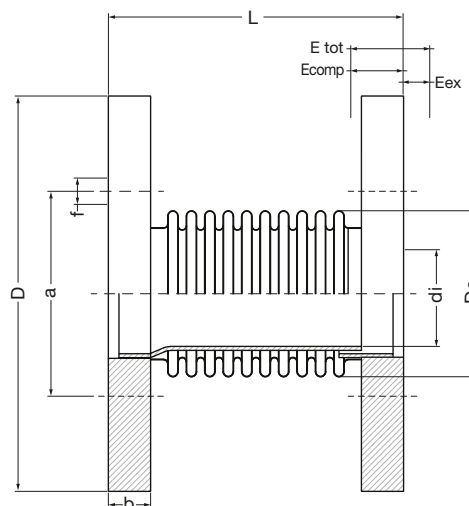
PN 16

STANDARD MATERIALS

Bellows: AISI 321-1.4541

Welding end: Carbon Steel

Internal sleeve: AISI 321-1.4541



// CDAF02 WITHOUT INTERNAL SLEEVE

code	DN		E _{tot}	E _{comp}	E _{ext}	Dimensions (mm)								R +/-20%	A
	mm	inch				L	D	a	n	f	b	di	De		
CDAF02040001	40	1 1/2"	17	11	6	117	150	110	4	18	16	44	69,5	153,00	128,98
CDAF02050001	50	2"	20	13	7	125	165	125	4	18	18	56	79,5	117,69	128,98
CDAF02065001	65	2 1/2"	24	16	8	121	185	145	4	18	18	71	100,7	114,99	195,19
CDAF02080001	80	3"	27	18	9	116	200	160	8	18	20	84	114,1	95,83	195,19
CDAF020100001	100	4"	32	21	11	131	220	180	8	18	22	109	151	97,31	273,61
CDAF020125001	125	5"	30	20	10	135	250	210	8	18	24	134	175	74,86	273,61
CDAF020150001	150	6"	36	24	12	175	185	240	8	22	24	162	204	82,06	452,38
CDAF020200001	200	8"	28	19	9	171	340	295	12	22	26	213	257	61,54	452,38
CDAFC20250002	250	10"	32	21	11	193	405	355	12	22	32	267	300	77,69	620,14

// CDAF02 WITH INTERNAL SLEEVE

code	DN		E _{tot}	E _{comp}	E _{ext}	Dimensions (mm)								R +/-20%	A
	mm	inch				L	D	a	n	f	b	di	De		
CDAFC20100001	40	1 1/2"	17	11	6	117	150	110	4	18	16	40	69,5	153,00	128,98
CDAFC20100002	50	2"	20	13	7	125	165	125	4	18	18	53	79,5	117,69	128,98
CDAFC20125001	65	2 1/2"	24	16	8	121	185	145	4	18	18	67	100,7	114,99	195,19
CDAFC20125002	80	3"	27	18	9	116	200	160	8	18	20	80	114,1	95,83	195,19
CDAFC20150001	100	4"	32	21	11	131	220	180	8	18	22	105	151	97,31	273,61
CDAFC20150002	125	5"	30	20	10	135	250	210	8	18	24	130	175	74,86	273,61
CDAFC20200001	150	6"	36	24	12	175	185	240	8	22	24	158	204	82,06	452,38
CDAFC20200002	200	8"	28	19	9	171	340	295	12	22	26	209	257	61,54	452,38
CDAFC20250002	250	10"	32	21	11	193	405	355	12	22	32	263	300	77,69	620,14

Multi-Ply Axial Expansion Joint with with weld-on ends for Residential and Industrial Applications

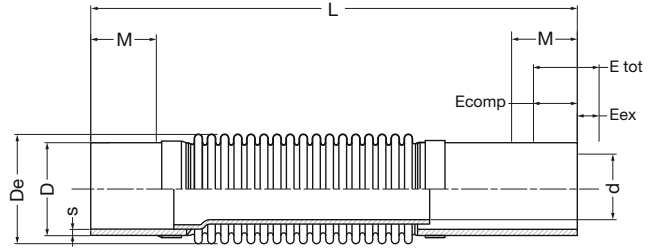
PN 16

STANDARD MATERIALS

Bellows: AISI 321-1.4541

Welding end: Carbon Steel

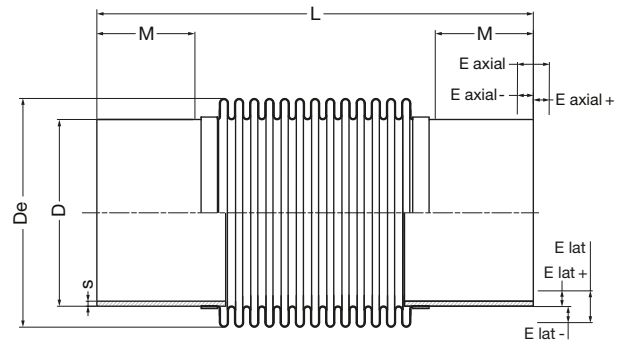
Internal sleeve: AISI 304-1.4301



// CDAMC2 WITH INTERNAL SLEEVE

code	DN		E _{tot}	E _{comp}	E _{ext}	Dimensions (mm)						R +/-20%	A
	mm	inch				L	D	s	d	M	De		
CDAMC20015101	15	1/2"	30	20	10	170	21,3	2,70	13	20	27,2	285	4
CDAMC20020101	20	3/4"	30	20	10	160	26,9	2,70	18	20	32,9	318	6
CDAMC20025101	25	1"	40	26	14	200	33,7	2,70	21	25	41,0	1308	11
CDAMC20032101	32	1 1/4"	50	34	16	230	42,4	2,70	28	25	51,7	1139	16
CDAMC20040101	40	1 1/2"	50	34	16	250	48,3	2,70	36	30	61,0	388	22
CDAMC20050101	50	2"	45	30	15	255	60,3	2,70	45	30	70,5	418	30
CDAMC20065101	65	2 1/2"	45	30	15	265	76,1	3,05	60	30	86,2	362	45
CDAMC20080101	80	3"	45	30	15	265	88,9	3,05	70	30	100,9	400	63

Design and dimensions shown may be changed without prior notice

Expansion joints for exhaust gas**PN 0.5****STANDARD MATERIALS****Bellows:** AISI 321-1.4541**Welding end:** Carbon Steel**// CDAM01**

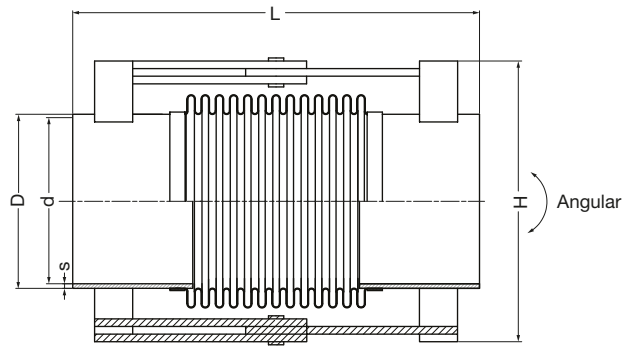
code	DN		E axial +/-	E lat +/-	Dimensions (mm)					R +/-20%	A
	mm	inch			L	M	D	s	De		
GSAL010020001	20	3/4"	12	8	165	38	26,7	2,77	37,5	364	8
GSAL010025002	25	1"	13	8	165	33	30	2,77	39,5	373	9
GSAL010032003	32	1 1/4"	15	8	165	34	38	2,77	48,5	155	13
GSAL010040004	40	1 1/2"	12	5	180	38	48,3	2,77	60,5	87	20
GSAL010050005	50	2"	16	7	195	41	60,3	2,77	74	103	32
GSAL010065006	65	2 1/2"	19	8	210	39	76,1	3,05	89,6	114	47
GSAL010080007	80	3"	16	5	250	62	88,9	3,05	113,5	151	80
GSAL010090008	90	3 1/2"	24	7	270	58	101,6	3,05	124,6	168	99
GSAL010100009	100	4"	23	9	290	49	114,3	3,05	150	266	136
GSAL010125010	125	5"	25	8	305	59	141,3	3,05	174	314	190
GSAL010150011	150	6"	28	7	305	61	168,3	3,4	205	324	270
GSAL010175012	175	7"	29	6	300	61	193,7	4,2	219	351	313
GSAL010200013	200	8"	29	5	310	68	219,1	4,5	256	423	439
GSAL010250014	250	10"	29	5	320	60	273	6,3	299	505	614

Multi-Ply Stainless Steel Hinged Expansion Joint with weld-on ends

PN 25

STANDARD MATERIALS

- Bellows:** AISI321-1.4541
- Welding end:** Carbon Steel
- Hardware:** Carbon Steel



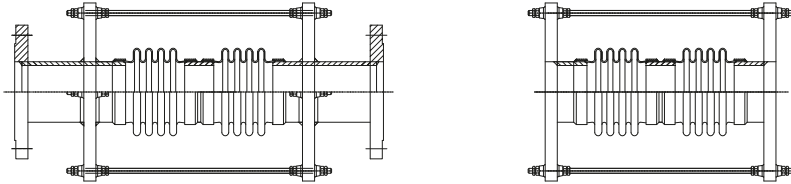
// CDGM02

code	DN		Angular Stroke	Dimensions (mm)				Angular momentum	A
	mm	inch	+/- degrees	L	D	s	H	N*mm	cm ²
CDGM030040001	40	1 1/2"	18,4	309	48,3	2,77	150	7	16
CDGM030050001	50	2"	15,2	301	60,3	2,77	150	11	26
CDGM030065001	65	2 1/2"	13	284	76,1	3,05	200	12	40
CDGM030080001	80	3"	12	331	88,9	3,05	200	31	72
CDGM030100001	100	4"	10,8	348	114,3	3,05	250	48	130
CDGM030125001	125	5"	13,8	394	141,3	3,05	260	97	180
CDGM030150001	150	6"	11,5	444	168,3	3,4	300	116	256
CDGM030200001	200	8"	10	516	219,1	4,5	375	213	417
CDGM030250001	250	10"	5	517	273	6,3	470	120	596

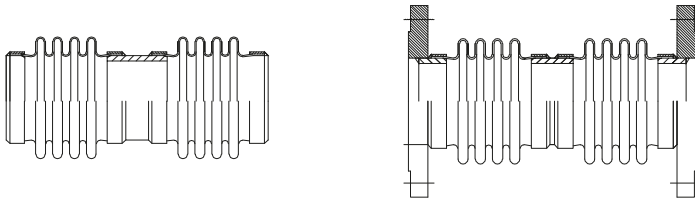
Design and dimensions shown may be changed without prior notice

// SPECIAL APPLICATION EXPANSION JOINTS

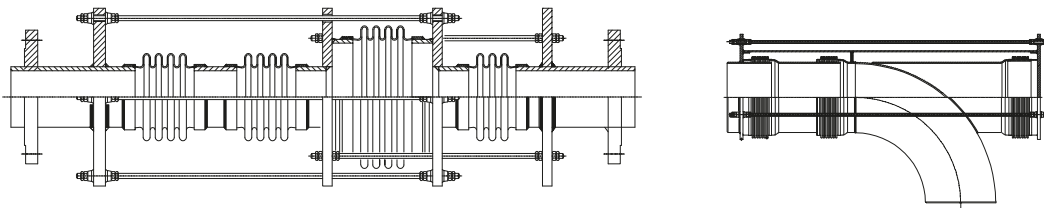
// LATERAL EXPANSION JOINTS WITH FLANGED AND WELD-ON ENDS



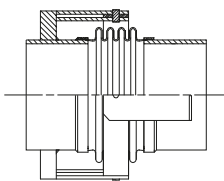
// UNIVERSAL EXPANSION JOINTS WITH FLANGED AND WELD-ON ENDS



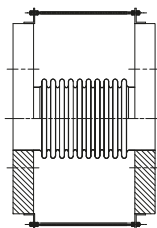
// THRUST ELIMINATION EXPANSION JOINTS WITH FLANGED AND WELD-ON ENDS



// GIMBAL EXPANSION JOINT



// DISMOUNTING JOINT



// ROLLER SUPPORTS

Pipe Rollers are designed to meet the following needs:

- Supporting and guiding rigid pipes that exert a large vertical load
- Support and guide insulated pipes
- Eliminate the friction on the support point caused by the expansion of the pipeline

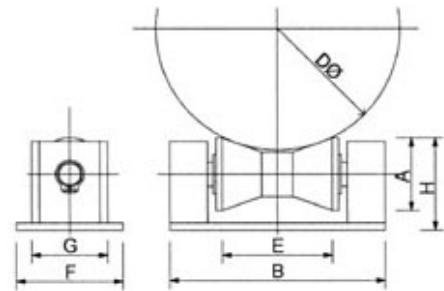
ROLLER SUPPORT TYPE "D"

Roll: Galvanized carbon steel

Hardware: Galvanized carbon steel

Pin: AISI 304 stainless steel

Bushings: Sintered bronze on P.T.F.E.



Support type	Pipe diameter	Vertical load	A	B	E	F	G	H
model	mm	Kg	mm	mm	mm	mm	mm	mm
RUDD0501	25 ÷ 100	500	40	105	43	57	45	55
RUDD1001	80 ÷ 180	1000	48	142	75	71	54	62
RUDD1751	175 ÷ 300	2500	86	184	144	184	118	93

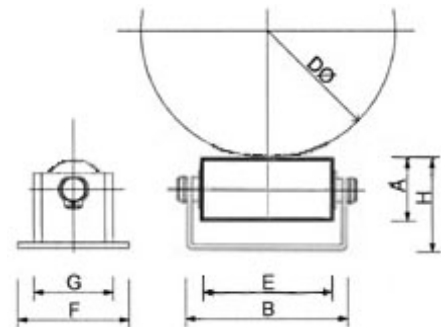
ROLLER SUPPORT TYPE "L"

Rullo: Galvanized carbon steel

Hardware: Galvanized carbon steel

Pin: AISI 304 stainless steel

Bushings: Sintered bronze on P.T.F.E.



Support type	Pipe diameter	Vertical load	A	B	E	F	G	H
model	mm	Kg	mm	mm	mm	mm	mm	mm
RULL0401	0 ÷ 100	600	22	82	70	Vedi G	36	30
RULL0601	50 ÷ 150	600	22	110	97	Vedi G	36	30
RULL1001	80 ÷ 250	1000	46	110	80	98	66	58
RULL2001	200 ÷ 500	3200	82	190	150	160	100	102

Design and dimensions shown may be changed without prior notice

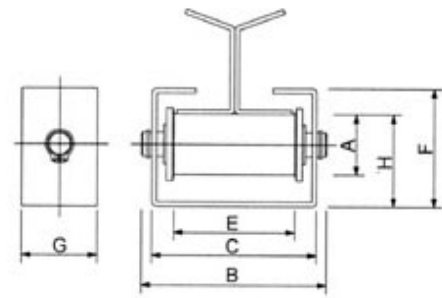
ROLLER SUPPORT TYPE "S"

Rullo: Galvanized carbon steel

Hardware: Galvanized carbon steel

Pin: AISI 304 stainless steel

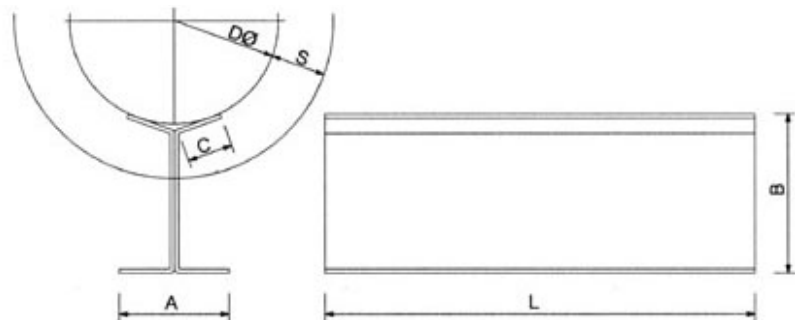
Bushings: Sintered bronze on P.T.F.E.



Support type	Pipe diameter	Vertical load	A	B	E	F	G	H
model	mm	Kg	mm	mm	mm	mm	mm	mm
RUSS0601	SL 60	600	21	90	82	40	35	30
RUSS0751	SL 75	1000	40	110	95	77	50	61
RUSS1001	SL 100	1500	52	153	135	100	65	76
RUSS1201	SL 120	2500	68	212	190	130	90	100

"SL" SADDLE FOR PIPE ROLLS TYPE "S"

Hardware: Fe37B – Fe42B



Support type	Pipe diameter	Vertical load	S	L	A	B	C
model	mm	Kg	mm	mm	mm	mm	mm
RUSL0601	0 ÷ 80	350	40	200	60	80	24
RUSL0751	50 ÷ 180	600	60	300	60	95	33
RUSL1001	100 ÷ 300	1000	80	300	92	125	58
RUSL1201	300 ÷ 500	2000	110	300	135	170	94

// FLEXIBLE METAL HOSE

Sitef manufactures and distributes **stainless steel corrugated flexible metallic hose**, suitable for conveying a wide range of fluid types in heavy-duty applications where compensation joints cannot be used.

The hoses are produced by mechanical forming or hydroforming in order to create continuous walls with parallel waves. This construction **guarantees both a high seal of the internal pressure while maintaining the maximum flexibility** necessary to absorb various types of movements when operating in restricted spaces, thermal changes, vibration or system misalignments.

The external coating (depending on the application), can be composed of one or more metal braids in order to **ensure resistance to the highest pressures and mechanical stresses** produced by deformation in operation.

The standard manufacturing materials are 316L stainless steel for the hose and 304 for the braid providing excellent to temperatures ranging from -240 ° C to + 700 ° C.

Corrosion, abrasion, and fire resistance, together with the light construction, and customized fittings complete the range of advantages guaranteed by Sitef products, ideal for those who need a **reliable, high quality and durable hose solution**.



Design and dimensions shown may be changed without prior notice

Flexible metal hose - anular corrugated - AISI 316L with one braid AISI 304

Hose: AISI 316L-DIN 1.4404-Z2CN17-12

Braid: AISI 304-DIN 1.4301-Z6CN18-09

Safety factor: 4:1

Temperature: -270 °C +700 °C

Tolerance: $\pm 0,2$ mm: DN 6 ÷ DN 32
 $\pm 0,3$ mm: DN 40 ÷ DN 200

// 99DMM

SITEF Code	Code	↔			↔		↻	↷		📦
		DN	mm	inch	without braid	with braid		dynamic	static	
M5500306	99DMM006110000	6	6,2	1/4	9,6	10,7	120	85	25	0,149
M5500308	99DMM008130000	8	8,2	5/16	12,1	13,5	100	125	32	0,166
M5500310	99DMM010180000	10	10,3	3/8	14,3	15,5	90	140	38	0,214
M5500312	99DMM013210000	12	12,2	1/2	16,7	18,0	80	140	45	0,240
M5500316	99DMM016230000	16	16,2	5/8	21,6	23,0	70	160	58	0,400
M5500320	99DMM020300000	20	20,2	3/4	26,8	28,3	64	170	70	0,494
M5500325	99DMM025380000	25	25,4	1	32,2	33,5	50	190	85	0,628
M5500332	99DMM032430000	32	34,3	1 1/4	41,1	42,8	40	260	105	0,847
M5500340	99DMM038540000	40	40,1	1 1/2	49,5	51,5	35	300	130	1,172
M5500350	99DMM051680000	50	50,3	2	60,3	62,5	30	320	160	1,606
M5500365	99DMM063880000	65	65,6	2 1/2	81,0	83,0	24	410	180	1,984
M5500380	99DMM075000000	80	80,3	3	95,0	97,0	18	450	200	2,154
M5500610	99DMM100000000	100	100,8	4	117,0	119,0	16	560	290	3,001
M5500612	99DMM125530000	125	125,4	5	150,0	152,5	14	710	325	4,887
M5500615	99DMM150780000	150	150,8	6	175,0	177,5	10	815	380	5,705
M5500620	99DMM200280000	200	197,0	8	225,0	228,0	8	1015	500	9,150

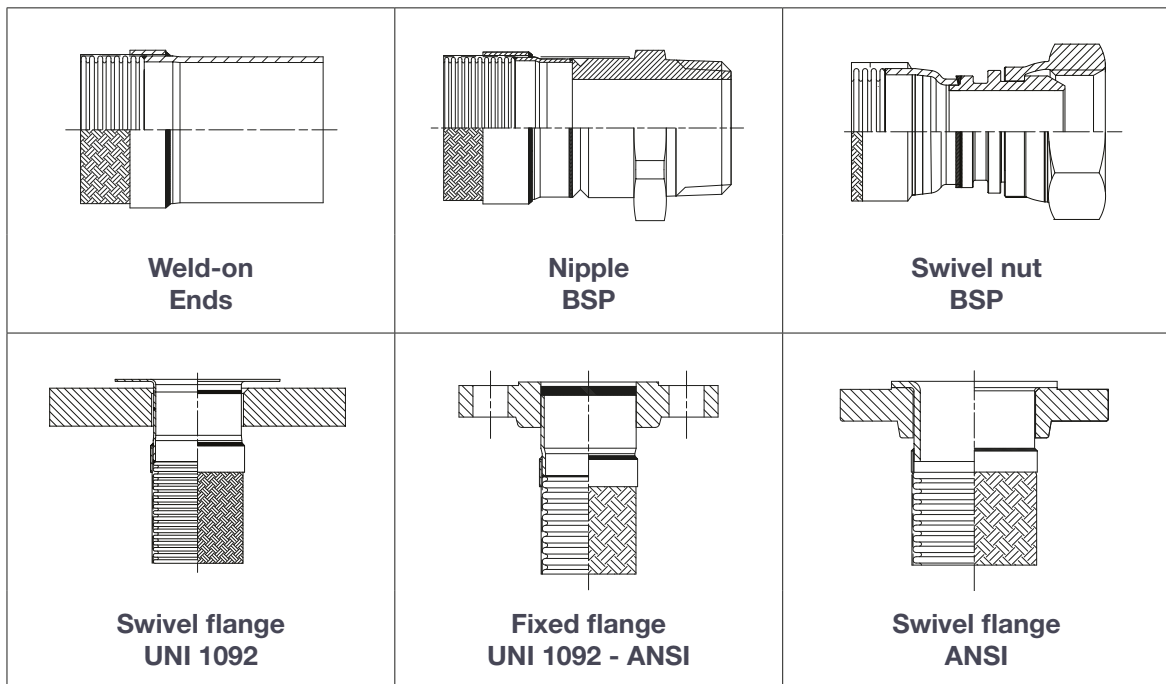
All data refer to an operative temperature of 20°C.

// FLEXIBLE METAL HOSE ASSEMBLIES

Sitef manufactures a **wide range of single and double braided flexible metal hoses certified by RINA UNI EN10380** for Industrial applications.

The hoses can be fitted with BSP, NPT, ORFS, SAE, JIC, DIN 2353 ends, **fixed or swivel flanged** ends or customer specific ends. All assemblies are TIG welded to internal welding specifications and certified to quality requirements.

STANDARD TYPE



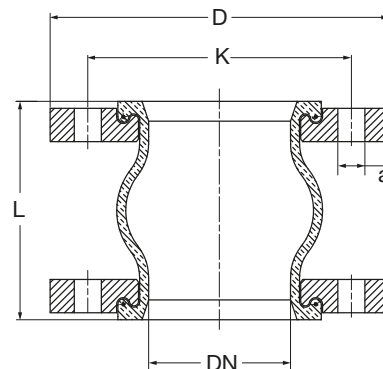
The Sitef product range also includes **flexible metal hoses for specialty applications** like automotive exhaust systems, solar boilers, heating and plumbing, civil water and gas connections, pump and autoclave connections, and gas meter and burner hoses.

Design and dimensions shown may be changed without prior notice

// STANDARD RUBBER EXPANSION JOINTS

Standard expansion joints

PN 16

Model: GE332BD10**Red band:** Water, potable water and compressed air.**Material:** EPDM**Temperature:** -20 °C +90 °C (-4 °F +194 °F)**Model:** GE312BD10**Yellow band:** Gas, methane, oils and petroleum products. No LPG.**Material:** NBR**Temperature:** -20 °C +90 °C (-4 °F +194 °F)**Model:** GE362BD10**Green band:** Acids and chemicals.**Material:** CSM**Temperature:** -20 °C +90 °C (-4 °F +194 °F)**Model:** GE392BD10**White band:** Fatty and oily foods. Not for potable water.**Material:** NBR**Temperature:** -20 °C +90 °C (-4 °F +194 °F)

DN		axial mov.		lat mov.	angular mov.	length	PN	vacuum	dimensions flanges		
		comp	ext	lat +/-	angular	L			D	K	n x a
mm	inch	mm	mm	mm	°	mm	bar	mm Hg	mm	mm	mm
25	1"	30	20	30	30	130	16	700	115	85	4X14
32	1 1/4"	30	20	30	30	130	16	700	140	100	4X18
40	1 1/2"	30	20	30	30	130	16	700	150	110	4X18
50	2"	30	20	30	30	130	16	700	165	125	4X18
65	2 1/2"	30	20	30	30	130	16	700	185	145	4X18
80	3"	30	20	30	30	130	16	600	200	160	8X18
100	4"	30	20	30	30	130	16	400	220	180	8X18
125	5"	30	20	30	30	130	16	300	250	210	8X18
150	6"	30	20	30	30	130	16	300	285	240	8X22
200	8"	25	30	30	10	130	16	300	340	295	8X22
250	10"	10	30	15	5	130	16	200	395	350	12X22

// CUSTOMIZED RUBBER EXPANSION JOINTS

Alfagomma manufactures high quality engineered **rubber expansion joints**. The **AG joint range** is a result of **state-of-the-art modelling software**, innovative robotic technology and **high-quality raw materials** to produce a **high-performance tailor-made product** to the customer's needs.

Prototyping trials are conducted with minimal risk of error, completely removing the disadvantages associated with traditional modelling. The process involves FEA analysis and virtual simulation prior to physical production. **Robotic technology ensures accuracy and reliability of the final product.**

AG JOINT PRO



**Acute radius type
Fixed flange**

AG JOINT PLUS



**Acute radius type
Swivel flange**

AG JOINT AUTO



**Autostable type
Swivel flange**



THE ALFAGOMMA GROUP

ALFAGOMMA

ARGENTINA – Buenos Aires
Moreno Store Center
Belisario Roldán 2616 - CP. 1744
La Reja - Bs. As.
+54 (11) 5365-6062/6063

AUSTRALIA – Sydney
50 Honeycomb Drive
Eastern Creek
Sydney, NSW 2766
+61 (2) 98 53 09 00
sydney@alfagomma.com.au

BELGIUM – Benelux
Koeweideblock 4/D3
1785 Merchtem
+32 (052) 509 747
info.benelux@alfagomma.com

BRAZIL – Guaranésia
Rua Felice Gennasio, 401
Distrito Indl. Dr. Firmino Rocha de Freitas
Guaranésia, MG 37810-000
+55 (35) 35 55 04 00
contato@alfagomma.com.br

CANADA – Montreal
6550 Abrams
St. Laurent, Montreal
Quebec H4S 1Y2
+1 (514) 33 35 577
info@alfagomma.ca

CHINA – Ningbo
No. 296 Taiyuan Road
Investment Pioneering Centre
Jiangbei District
Ningbo, 315022
+86 (574) 88 15 72 88
alfagomma.china@alfagomma.com.cn

FRANCE – Villepinte
Le Sisley – Parc d'activité Paris Nord 2
23 Allée des Impressionnistes
93420 Villepinte
+33 (1) 48172121
agfrance.info@alfagomma.com

GERMANY – Herne
Friedrich der Grosse 10
44628 Herne
+49 (2323) 14 730
info.germany@alfagomma.com

GREECE – Athens
85 Kifissou Avenue
12241 Aigaleo, Athens
+30 (210) 41 19 909
alfagomma-hellas@ath.forthnet.gr

INDONESIA – Tigaraksa
JL. Raya Pemda Tigaraksa km. 4
No 34, Matagara
Tigaraksa, Tangerang 15720
+62 (21) 59 96 301
jakarta@alfagomma.co.id

ITALY – Vimercate
Via Torri Bianche 1
20871 Vimercate (MB)
+39 (039) 60 161
info@alfagomma.com

MALAYSIA – Pasir Gudang
Plo 405, Jalan Perak 4
81707 Pasir Gudang
Negeri Johor Darul Takzim
+60 (7) 25 72 000
alfagomma@alfagomma.com.my

MEXICO – Torreón
Av. Industria de la transformacion
Parque Pymes 585
27400 Torreón, Coahuila
+52 8713125026
alfagomma.mexico@alfagomma.com

SINGAPORE
14 Tuas Ave 11
Singapore
+65 63609000
alfagomma@alfagomma.com.sg

SOUTH AFRICA – Johannesburg
17 Quark Crescent Linbro Business Park
Sandton 2065
+27 (11) 20 10 900
alfagomma@alfagomma.co.za

SOUTH KOREA – Hwasung
15 Julteo Gil
Yangkam-Myun, Hwasung-Si
Kyungki-Do 18630
+82 (31) 35 28 671
alfagomma@alfagomma.co.kr

UNITED KINGDOM – Haydock
43 Wilcock Road
Old Boston Trading Estate Haydock
St. Helens WA11 9TG
+44 (1942) 40 76 80
haydock.sales@alfagomma.com

UNITED STATES OF AMERICA – Burlington
3520 West Avenue
IA 52601 Burlington
+1 (319) 75 89 224
info@alfagomma.us

DUNLOP HIFLEX

DENMARK – Copenhagen
Vallensbaekvej 24,
2605 Brøndby Copenhagen
+45 (43) 240400
info@dunlophiflex.dk

ESTONIA – Tallin
Läike tee 32/1 - Peetri alevik,
Rae vald - 75312 Harjumaa (Tallinn)
Tel: +372 (0) 605 4900
tallinn@dunlophiflex.ee

FINLAND – Pirkkala
Jasperintie 320
33960 Pirkkala
+358 (207) 625 700
info@dunlophiflex.fi

NETHERLANDS – Deventer
Hunneperkade 86
7418 BT Deventer
+31 (570) 66 05 70
info@dunlophiflex.nl

NORWAY – Oslo
Stanseveien 27
Pb. 174 Kalbakken
0903 Oslo
+47 (23) 33 86 00
post@dunlophiflex.no

SWEDEN – Halmstad
Kistinge Industriområde
Seldonsvagen 2
30180 Halmstad
+46 (104) 14 44 04
halmstad@dunlophiflex.se

ARGUS

GERMANY – Ettlingen
Pforzheimer Str. 126
76275 Ettlingen
+49 (7243) 50 550
info@argus-fluidtechnik.de

UNITED KINGDOM – Salisbury
Telford Road
Salisbury, Wiltshire SP2 7PH
+44 (1722) 42 05 90
sales@hiflex-europe.com



HEADQUARTER
Alfagomma SpA
Via Torri Bianche 1
20871 Vimercate (MB) Italy
marketing@alfagomma.com
www.alfagomma.com



SALES OFFICE
SITEF Service srl
Via Attilio Di Sante s.n.
64100 Zona Industriale Sant'Atto (TE)
+39 0861 232129
info@sitef-service.it - www.sitef-service.it