

 **ALFAGOMMA**

**DOGLEG ANTI-SHOCK
HOSE ASSEMBLY**



// DOGLEG

Alfagomma Dogleg is an innovative, reliable and easy to install shock and vibration dampener hose assembly for naval vessels. The system provides the required flexibility to **absorb movement in multiple directions** and ensures long service life and **advanced performance** in severe marine environments.

Compared to current solutions available on the market, Alfagomma high-quality Dogleg assemblies are **easier to install and replace on-board by nonspecialist field technicians**, thus reducing costs and lengthy downtimes. They incorporate the company's proven hose assembly manufacturing technology along with stainless steel and aluminum bronze parts for maximum protection in corrosive environments, proudly made in Italy.

The solution meets the strict military standards required by shipbuilding companies for new naval units and refits.



TOP-QUALITY AND RELIABLE SOLUTION

- **SINGLE SOURCE INTEGRATED SYSTEM SUPPLIER**
- **ASSEMBLY AND TESTING (ISO 9001)**
- **RINA TYPE APPROVAL FOR MARINE REQUIREMENTS (TAC)**
- **EUROPEAN MARINE EQUIPMENT DIRECTIVE (MED)**
- **MIL-STD-167 (VIBRATION) AND MIL-S-901 (SHOCK)**



// DOGLEG'S BENEFITS

Alfagomma Dogleg advanced manufacturing technology enables smooth, precise, and **fast assembly processes on board**. The operators achieve **quicker** and **safer installation**, meeting strict quality control requirements for reliability.



- **EASY TO INSTALL**

ANY TIME, INCLUDING EMERGENCY SITUATIONS WHICH REQUIRE RAPID ACTION



- **SAVE TIME**

FASTER OPERATIONS, IN BOTH NEW INSTALLATIONS AND REFITS



- **SAVE MONEY**

OVERALL COST-EFFICIENCY THROUGH THE LIFE CYCLE OF THE VESSEL

// DOGLEG'S ASSEMBLY REPLACEMENT PROCEDURE



- 1** Unscrew bolts from clamps. Clamps can be removed using standard assembly tools.



- 2** Hose removal operation is easy and fast. Once the clamps are removed, old hose assembly can be discarded.



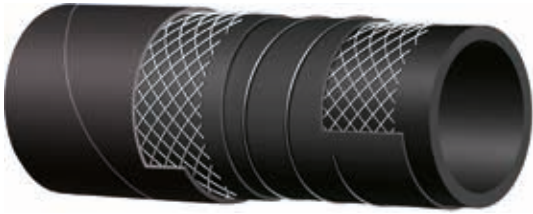
- 3** The new hose assembly is simply installed between the elbow and the flanged fitting.



- 4** Replace clamps and tension bolts to required specification.

// HOSE ASSEMBLIES

// 6DLAA



Dogleg S&D 16 bar (240 psi) MED 2014/90/EU with insulation cover

Tube: black conductive NBR.

Reinforcement: high tensile textile cords with embedded steel helix wire - anti-static wire.

Cover: black conductive CR - abrasion, ozone, hydrocarbon and fire resistant.

Application: large bore hose assembly specifically designed for anti-shock and noise reduction features, used in maritime and navy industries to convey fuel, oil, sea water, fresh water.

Rina Type approved hose assemblies.

Electrically continuous.

Constant operation: -10 °C +90 °C (14 °F +194 °F)

ID (mm)	ID (in)	OD (mm)	OD (in)	WP (bar)	WP (psi)	BP (Mpa)	BP (psi)	BR (mm)	BR (in)	Vacuum (%)	Weight (kg/m)	Weight (lb/ft)
51.0	2"	67.0	2.64	16	240	64	960	255	10.04	100.00	2.320	1.56
63.0	2 1/2"	81.0	3.19	16	240	64	960	380	14.96	90.00	3.250	2.18
76.0	3"	94.0	3.70	16	240	64	960	380	14,96	90.00	3.740	2.51
102.0	4"	122.0	4.80	16	240	64	960	508	20.00	90.00	5.460	3.66
127.0	5"	149.0	5.87	16	240	64	960	635	25.00	90.00	7.800	5.23
152.0	6"	176.0	6.93	16	240	64	960	760	29.92	90.00	10.200	6.84
203.0	8"	237.0	9.33	16	240	64	960	1015	39.96	90.00	19.350	12.98

IN-HOUSE MANUFACTURING, ASSEMBLY, AND TESTING



Proprietary design fittings in Stainless steel 316 and Aluminum Bronze complete with O-Ring seals

// ANTI-FLAME INSULATION COVER



MED 2014/90/EU

Structure: made of several layers of fireproof materials,

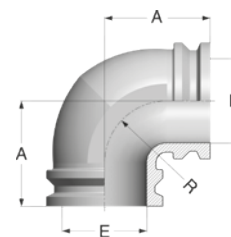
Installation: to be installed around the Dogleg assembly. Thanks to its split design, it can be mounted subsequently and easily re-opened for any inspection.

Application: it provides protection against heat and flames up to +800 °C (+1472 °F) for 30 minutes.

Compliant to ISO 15540.

The assembly with anti-flame cover is fully compliant to the Marine Equipment Directive (MED) 2014/90/EU.

// ELBOW



// VICTORIA - DOGLEG

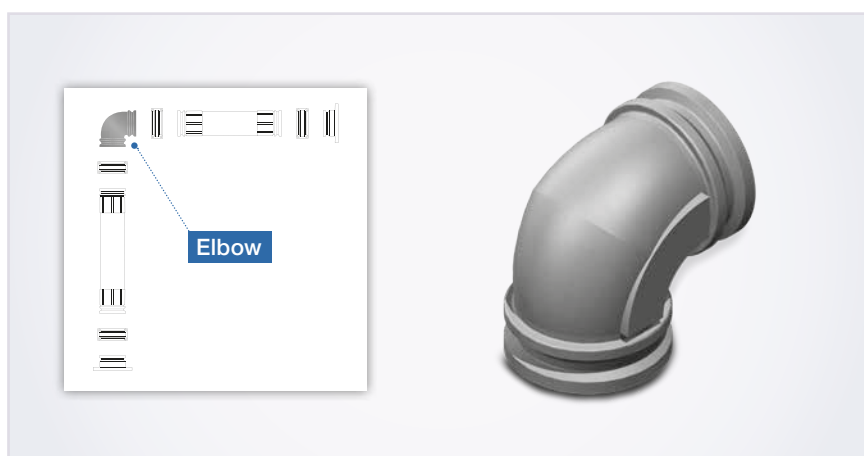
90° Elbow: Victoria - Victoria - Stainless steel 316

Item Code	Product Code	Hose ID (in)	Hose ID (mm)	A (mm)	R (mm)	E (mm)	Weight (kg)	Weight (lb)
2309462	I3AC7SC7-077077	2"	51,0	83,0	35,0	44,0	2,50	5,51
2308910	I3AC7SC7-089089	2 1/2"	63,0	92,0	48,0	56,0	3,36	7,41
2309463	I3AC7SC7-103103	3"	76,0	109,0	53,0	66,5	5,62	12,38
2308911	I3AC7SC7-128128	4"	102,0	128,0	71,0	90,5	9,60	21,16
2309464	I3AC7SC7-153153	5"	127,0	152,0	89,0	114,0	15,90	35,05
2308371	I3AC7SC7-190190	6"	152,0	172,0	102,0	138,0	25,18	55,51
2309465	I3AC7SC7-240240	8"	203,0	249,0	127,0	187,0	51,12	112,70

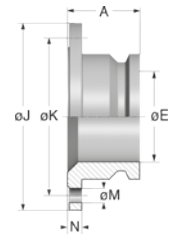
// VICTORIA - DOGLEG

90° Elbow: Victoria - Victoria - Aluminum Bronze

Item Code	Product Code	Hose ID (in)	Hose ID (mm)	A (mm)	R (mm)	E (mm)	Weight (kg)	Weight (lb)
2309406	I7AC7SC71-077077	2"	51,0	83,0	35,0	44,0	2,43	5,37
2308912	I7AC7SC71-089089	2 1/2"	63,0	92,0	48,0	56,0	3,27	7,21
2309466	I7AC7SC71-103103	3"	76,0	109,0	53,0	66,5	5,47	12,05
2308913	I7AC7SC71-128128	4"	102,0	128,0	71,0	90,5	9,34	20,60
2309467	I7AC7SC71-153153	5"	127,0	152,0	89,0	114,0	15,47	34,11
2308914	I7AC7SC71-190190	6"	152,0	172,0	102,0	138,0	24,50	54,02
2309468	I7AC7SC71-240240	8"	203,0	249,0	127,0	187,0	49,76	109,69



// FIXED FLANGE



// VICTORIA - DOGLEG

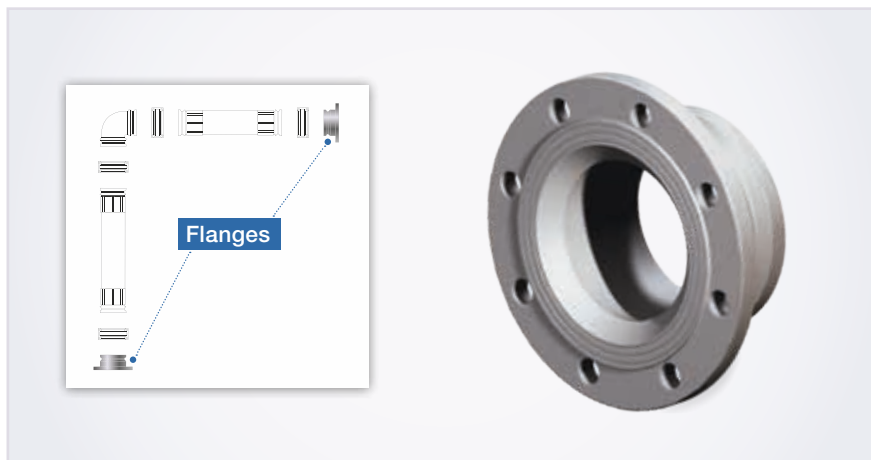
Victoria - Fixed EN 1092-1 PN16/1B flange - Stainless steel 316

Item Code	Product Code	Hose ID (in)	Hose ID (mm)	DN (mm)	A (mm)	N (mm)	ø J (mm)	ø K (mm)	ø E (mm)	Holes no.	ø M (mm)	Weight (kg/m)	Weight (lb/ft)
2309444	I3AC71BD-077040	2"	51,0	40,0	83,0	18,0	150,0	110,0	44,0	4	18,0	3,186	7,024
2309441	I3AC71BD-077050	2"	51,0	50,0	85,0	18,0	165,0	125,0	44,0	4	18,0	3,678	8,109
2308905	I3AC71BD-089065	2 1/2"	63,0	65,0	86,0	18,0	185,0	145,0	56,0	8	18,0	4,397	9,694
2309442	I3AC71BD-103080	3"	76,0	80,0	91,0	20,0	200,0	160,0	66,5	8	18,0	5,840	12,875
2308906	I3AC71BD-128100	4"	102,0	100,0	98,0	20,0	220,0	180,0	90,5	8	18,0	7,353	16,210
2309443	I3AC71BD-153125	5"	127,0	125,0	100,0	22,0	250,0	210,0	114,0	8	18,0	9,837	21,687
2308370	I3AC71BD-190150	6"	152,0	150,0	110,0	22,0	285,0	240,0	138,0	8	22,0	15,008	33,087
2309367	I3AC71BD-240200	8"	203,0	200,0	162,0	24,0	340,0	295,0	187,0	12	22,0	24,660	54,365
2309445	I3AC71BD-240250	8"	203,0	250,0	165,0	26,0	405,0	355,0	187,0	12	26,0	30,581	67,419

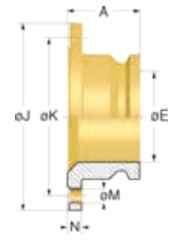
// VICTORIA - DOGLEG

Victoria - Fixed EN 1092-1 PN6/1B flange - Stainless steel 316

Item Code	Product Code	Hose ID (in)	Hose ID (mm)	DN (mm)	A (mm)	N (mm)	ø J (mm)	ø K (mm)	ø E (mm)	Holes no.	ø M (mm)	Weight (kg/m)	Weight (lb/ft)
2309446	I3AC71BB-103080	3"	76,0	80,0	91,0	16,0	190,0	150,0	66,5	4	18,0	4,921	10,849
2309447	I3AC71BB-128100	4"	102,0	100,0	98,0	16,0	210,0	170,0	90,5	4	18,0	6,331	13,957
2309448	I3AC71BB-153125	5"	127,0	125,0	100,0	18,0	240,0	200,0	114,0	8	18,0	8,416	18,554
2309449	I3AC71BB-190150	6"	152,0	150,0	110,0	18,0	265,0	225,0	138,0	8	18,0	13,020	28,704
2309450	I3AC71BB-240200	8"	203,0	200,0	162,0	20,0	320,0	280,0	187,0	8	18,0	22,230	49,008



// FIXED FLANGE



// VICTORIA - DOGLEG

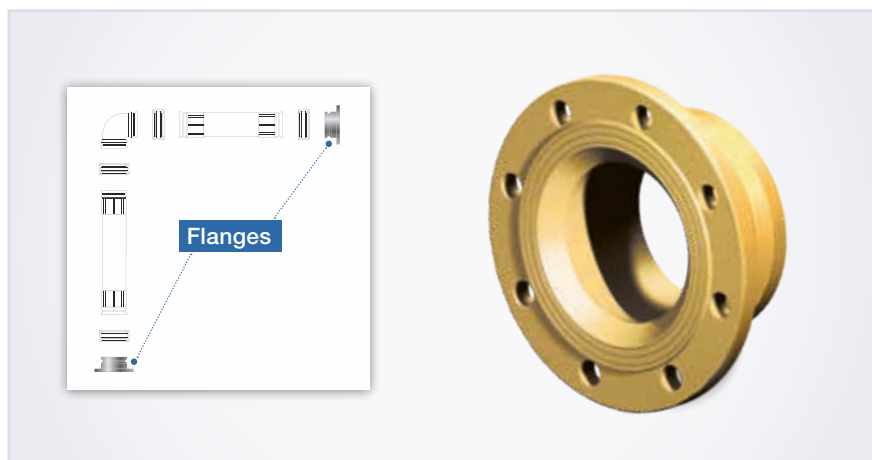
Victoria - Fixed EN 1092-1 PN16/1B flange - Aluminum Bronze

Item Code	Product Code	Hose ID (in)	Hose ID (mm)	DN (mm)	A (mm)	N (mm)	ø J (mm)	ø K (mm)	ø E (mm)	Holes no.	ø M (mm)	Weight (kg/m)	Weight (lb/ft)
2309451	I7AC71BD1-077040	2"	51,0	40,0	83,0	18,0	150,0	110,0	44,0	4	18,0	3,101	6,836
2309452	I7AC71BD1-077050	2"	51,0	50,0	85,0	18,0	165,0	125,0	44,0	4	18,0	3,579	7,890
2308907	I7AC71BD1-089065	2 1/2"	63,0	65,0	86,0	18,0	185,0	145,0	56,0	8	18,0	4,280	9,436
2309453	I7AC71BD1-103080	3"	76,0	80,0	91,0	20,0	200,0	160,0	66,5	8	18,0	5,683	12,529
2308908	I7AC71BD1-128100	4"	102,0	100,0	98,0	20,0	220,0	180,0	90,5	8	18,0	7,156	15,776
2309454	I7AC71BD1-153125	5"	127,0	125,0	100,0	22,0	250,0	210,0	114,0	8	18,0	9,573	21,105
2308909	I7AC71BD1-190150	6"	152,0	150,0	110,0	22,0	285,0	240,0	138,0	8	22,0	14,607	32,203
2309455	I7AC71BD1-240200	8"	203,0	200,0	162,0	24,0	340,0	295,0	187,0	12	22,0	24,000	52,910
2309456	I7AC71BD1-240250	8"	203,0	250,0	165,0	26,0	405,0	355,0	187,0	12	26,0	29,763	65,616

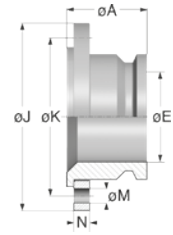
// VICTORIA - DOGLEG

Victoria - Fixed EN 1092-1 PN6/1B flange - Aluminum Bronze

Item Code	Product Code	Hose ID (in)	Hose ID (mm)	DN (mm)	A (mm)	N (mm)	ø J (mm)	ø K (mm)	ø E (mm)	Holes no.	ø M (mm)	Weight (kg/m)	Weight (lb/ft)
2309457	I7AC71BB1-103080	3"	76,0	80,0	91,0	16,0	190,0	150,0	66,5	4	18,0	4,790	10,560
2309458	I7AC71BB1-128100	4"	102,0	100,0	98,0	16,0	210,0	170,0	90,5	4	18,0	6,161	13,583
2309459	I7AC71BB1-153125	5"	127,0	125,0	100,0	18,0	240,0	200,0	114,0	8	18,0	8,191	18,058
2309460	I7AC71BB1-190150	6"	152,0	150,0	110,0	18,0	265,0	225,0	138,0	8	18,0	12,672	27,937
2309461	I7AC71BB1-240200	8"	203,0	200,0	162,0	20,0	320,0	280,0	187,0	8	18,0	21,635	47,697



// SWIVEL FLANGE



// VICTORIA - DOGLEG

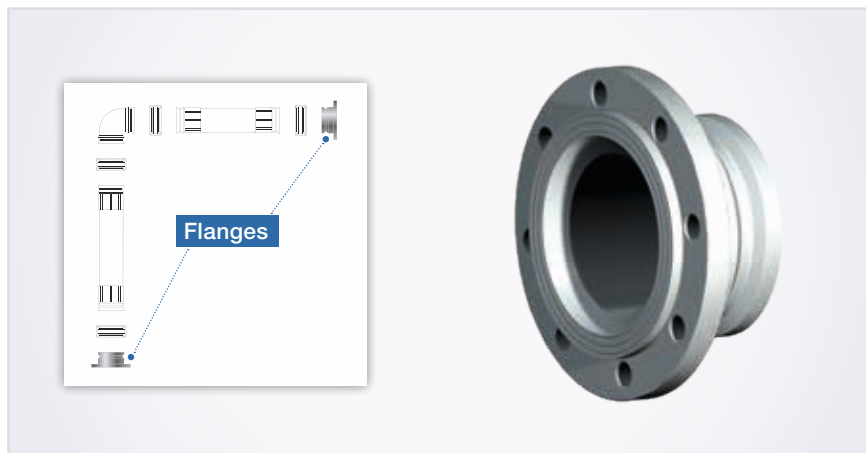
Victoria - Swivel EN 1092-1 PN16/4A flange - Stainless steel 316

Item Code	Product Code	Hose ID (in)	Hose ID (mm)	DN (mm)	A (mm)	N (mm)	ø J (mm)	ø K (mm)	ø E (mm)	Holes no.	ø M (mm)	Weight (kg/m)	Weight (lb/ft)
2309506	I3AC7WBD-077050	2"	51,0	50,0	90,5	20,0	165,0	125,0	44,0	4	18,0	4,366	9,625
2309507	I3AC7WBD-089065	2 1/2"	63,0	65,0	95,0	20,0	185,0	145,0	56,0	8	18,0	5,323	11,735
2309508	I3AC7WBD-103080	3"	76,0	80,0	102,0	20,0	200,0	160,0	66,5	8	18,0	6,766	14,916
2309509	I3AC7WBD-128100	4"	102,0	100,0	108,0	22,0	220,0	180,0	90,5	8	18,0	8,763	19,319
2309510	I3AC7WBD-153125	5"	127,0	125,0	111,0	22,0	250,0	210,0	114,0	8	18,0	11,430	25,199
2309511	I3AC7WBD-190150	6"	152,0	150,0	122,0	24,0	285,0	240,0	138,0	8	22,0	17,757	39,147
2309512	I3AC7WBD-240200	8"	203,0	200,0	177,0	26,0	340,0	295,0	187,0	12	22,0	28,958	63,841
2309513	I3AC7WBD-240250	8"	203,0	250,0	179,0	29,0	405,0	355,0	187,0	12	26,0	36,816	81,165

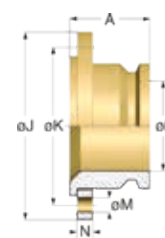
// VICTORIA - DOGLEG

Victoria - Swivel ASME ANSI B16.5 ASA150/4A flange - Stainless steel 316

Item Code	Product Code	Hose ID (in)	Hose ID (mm)	DN (mm)	A (mm)	N (mm)	ø J (mm)	ø K (mm)	ø E (mm)	Holes no.	ø M (mm)	Weight (kg/m)	Weight (lb/ft)
2309514	I3AC7WBE-077050	2"	51,0	50,0	90,5	19,0	152,4	120,7	44,0	4	19,1	3,758	8,285
2309515	I3AC7WBE-089065	2 1/2"	63,0	65,0	95,0	22,2	177,8	139,7	56,0	4	19,1	5,435	11,982
2309516	I3AC7WBE-103080	3"	76,0	80,0	102,0	23,8	190,5	152,4	66,5	4	19,1	7,002	15,437
2309517	I3AC7WBE-128100	4"	102,0	100,0	108,0	23,8	228,6	190,5	90,5	8	19,1	9,590	21,142
2309518	I3AC7WBE-153125	5"	127,0	125,0	111,0	23,8	254,0	215,9	114,0	8	22,4	11,890	26,213
2309519	I3AC7WBE-190150	6"	152,0	150,0	122,0	25,4	279,0	241,3	138,0	8	22,4	17,547	38,684
2309520	I3AC7WBE-240200	8"	203,0	200,0	177,0	28,6	342,9	298,5	187,0	8	22,4	30,437	67,101
2309521	I3AC7WBE-240250	8"	203,0	250,0	179,0	30,2	406,4	362,0	187,0	12	25,4	37,666	83,038



// SWIVEL FLANGE



// VICTORIA - DOGLEG

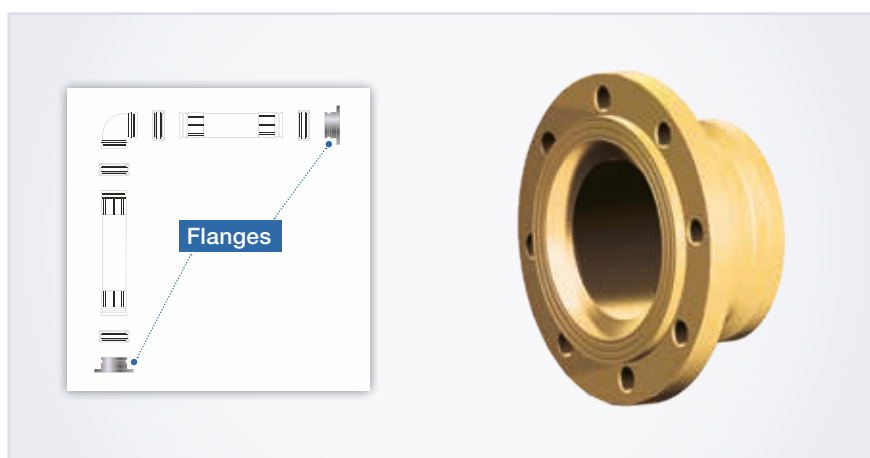
Victoria - Swivel EN 1092-1 PN16/4A flange - Aluminum Bronze

Item Code	Product Code	Hose ID (in)	Hose ID (mm)	DN (mm)	A (mm)	N (mm)	ø J (mm)	ø K (mm)	ø E (mm)	Holes no.	ø M (mm)	Weight (kg/m)	Weight (lb/ft)
2309528	I7AC7WBD1-077050	2"	51,0	50,0	90,5	20,0	165,0	125,0	44,0	4	18,0	4,250	9,370
2309529	I7AC7WBD1-089065	2 1/2"	63,0	65,0	95,0	20,0	185,0	145,0	56,0	8	18,0	5,181	11,422
2309530	I7AC7WBD1-103080	3"	76,0	80,0	102,0	20,0	200,0	160,0	66,5	8	18,0	6,585	14,517
2309531	I7AC7WBD1-128100	4"	102,0	100,0	108,0	22,0	220,0	180,0	90,5	8	18,0	8,529	18,803
2309532	I7AC7WBD1-153125	5"	127,0	125,0	111,0	22,0	250,0	210,0	114,0	8	18,0	11,124	24,524
2309533	I7AC7WBD1-190150	6"	152,0	150,0	122,0	24,0	285,0	240,0	138,0	8	22,0	17,282	38,100
2309534	I7AC7WBD1-240200	8"	203,0	200,0	177,0	26,0	340,0	295,0	187,0	12	22,0	28,183	62,132
2309535	I7AC7WBD1-240250	8"	203,0	250,0	179,0	29,0	405,0	355,0	187,0	12	26,0	35,831	78,993

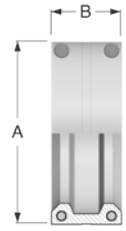
// VICTORIA - DOGLEG

Victoria - Swivel ASME ANSI B16.5 ASA150/4A flange - Aluminum Bronze

Item Code	Product Code	Hose ID (in)	Hose ID (mm)	DN (mm)	A (mm)	N (mm)	ø J (mm)	ø K (mm)	ø E (mm)	Holes no.	ø M (mm)	Weight (kg/m)	Weight (lb/ft)
2309536	I7AC7WBE1-077050	2"	51,0	50,0	90,5	19,0	152,4	120,7	44,0	4	19,1	3,658	8,064
2309537	I7AC7WBE1-089065	2 1/2"	63,0	65,0	95,0	22,2	177,8	139,7	56,0	4	19,1	5,290	11,662
2309538	I7AC7WBE1-103080	3"	76,0	80,0	102,0	23,8	190,5	152,4	66,5	4	19,1	6,907	15,227
2309539	I7AC7WBE1-128100	4"	102,0	100,0	108,0	23,8	228,6	190,5	90,5	8	19,1	9,334	20,578
2309540	I7AC7WBE1-153125	5"	127,0	125,0	111,0	23,8	254,0	215,9	114,0	8	22,4	11,572	25,512
2309541	I7AC7WBE1-190150	6"	152,0	150,0	122,0	25,4	279,0	241,3	138,0	8	22,4	17,078	37,650
2309542	I7AC7WBE1-240200	8"	203,0	200,0	177,0	28,6	342,9	298,5	187,0	8	22,4	29,623	65,307
2309543	I7AC7WBE1-240250	8"	203,0	250,0	179,0	30,2	406,4	362,0	187,0	12	25,4	36,658	80,816



// CLAMPS

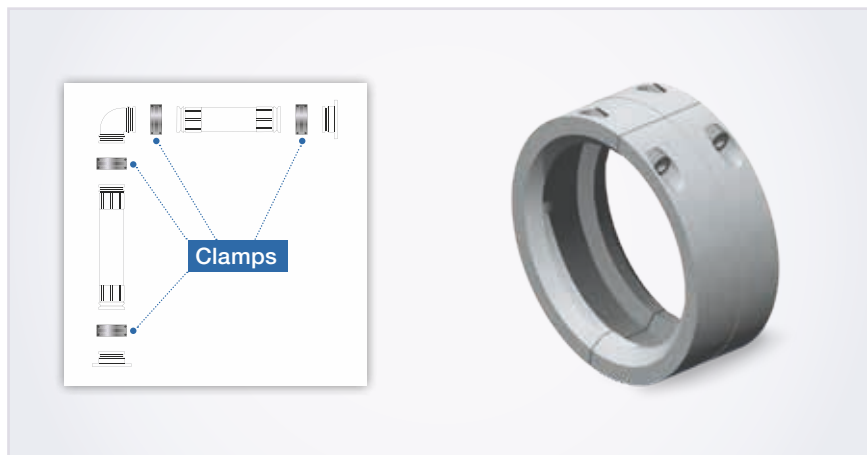


// VICTORIA - DOGLEG

Connection clamp - Stainless steel 316

Item Code	Product Code	Hose ID (in)	Hose ID (mm)	A (mm)	B (mm)	Weight (kg/m)	Weight (lb/ft)
2309469	I3LHC7-051	2"	51,0	100,0	56,0	1,80	3,96
2309470	I3LHC7-063	2 1/2"	63,0	112,0	58,0	2,21	4,88
2309471	I3LHC7-076	3"	76,0	127,0	62,0	2,75	6,07
2309472	I3LHC7-102	4"	102,0	151,0	66,0	3,49	7,69
2309473	I3LHC7-127	5"	127,0	179,0	70,0	4,85	10,68
2309474	I3LHC7-152	6"	152,0	220,0	84,0	7,53	16,60
2309475	I3LHC7-203	8"	203,0	278,0	160,0	24,88	54,84

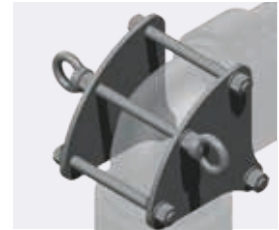
Item complete with bolts and washers.



// ACCESSORIES

// VICTORIA - DOGLEG

Support plate - Stainless steel 316



Item Code	Product Code	Hose ID (in)	Hose ID (mm)	Weight (kg/m)	Weight (lb/ft)
2309492	I3YC700P-051	2"	51,0	1,589	3,503
2309493	I3YC700P-063	2 1/2"	63,0	1,788	3,942
2309494	I3YC700P-076	3"	76,0	3,394	7,482
2309495	I3YC700P-102	4"	102,0	5,904	13,016
2309496	I3YC700P-127	5"	127,0	7,543	16,629
2308372	I3YC700P-152	6"	152,0	10,659	23,499
2309497	I3YC700P-203	8"	203,0	17,58	38,757

// SPARE PARTS

// VICTORIA - DOGLEG

O-Ring seal - NBR



Item Code	Product Code	Hose ID (in)	Hose ID (mm)	Internal diameter (mm)	Cross section diameter (mm)	Weight (kg/m)	Weight (lb/ft)
1903237	HNOJ0933-320000	2"	51,0	56,74	3,53	0,002	0,004
1903550	HNOJ0933-400000	2 1/2"	63,0	69,44	3,53	0,003	0,007
2309427	INJMC7-082534	3"	76,0	81,92	5,34	0,007	0,015
2308994	INJMC7-107534	4"	102,0	107,32	5,33	0,009	0,020
2307058	INJMC7-133534	5"	127,0	133,40	5,34	0,012	0,026
2306707	INJMC7-158699	6"	152,0	158,12	6,99	0,024	0,053
2309376	INJMC7-202699	8"	203,0	202,57	6,99	0,031	0,068

Also available in FKM and EPDM on request.

// VICTORIA - DOGLEG

Bolt kit - Stainless Steel 316

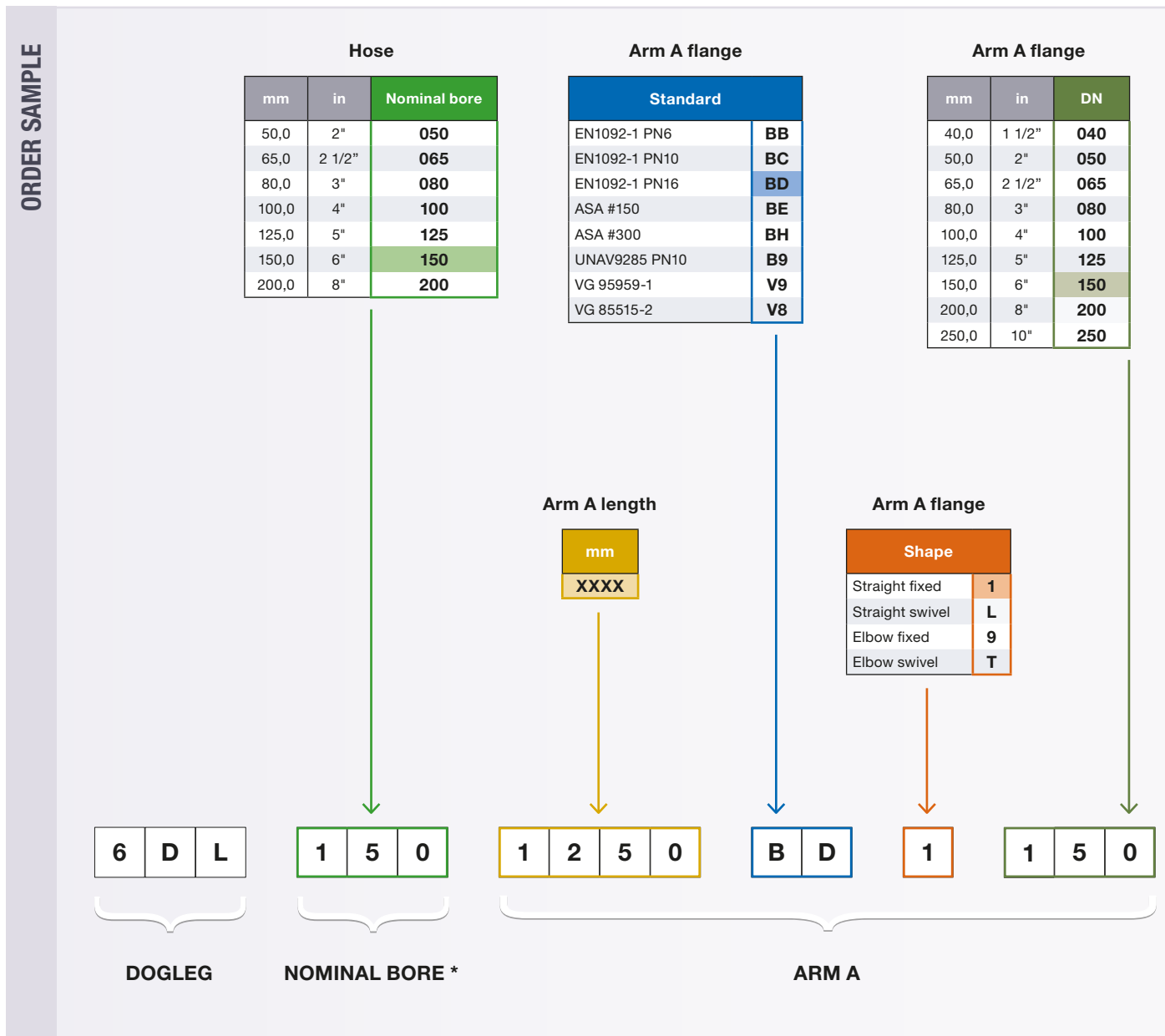


Item Code	Product Code	Hose ID (in)	Hose ID (mm)	Bolts no.	Bolts dimentions and standard	Washers dimentions and standard	Torque (Nm)	Weight (kg/m)	Weight (lb/ft)
on request	on request	2"	51,0	4	M8x45 UNI5931	M8 DIN7980	11-14	0,101	0,223
on request	on request	2 1/2"	63,0	4	M8x45 UNI5931	M8 DIN7980	11-14	0,101	0,223
on request	on request	3"	76,0	4	M10x50 UNI5931	M10 DIN7980	22-28	0,188	0,414
on request	on request	4"	102,0	4	M10x50 UNI5931	M10 DIN7980	22-28	0,188	0,414
on request	on request	5"	127,0	4	M12x60 UNI5931	M12 DIN7980	38-47	0,322	0,710
on request	on request	6"	152,0	4	M12x60 UNI5931	M12 DIN7980	38-47	0,322	0,710
on request	on request	8"	203,0	8	M14x80 UNI5931	M14 DIN7980	61-76	1,016	2,240

Also complete with washers.

// HOW TO ORDER

Fill in the form as in the example, ensuring the information is included as shown below.



* Hose bore is the same for both assemblies, what can differ is the length of each arm.

Easy understanding of customer needs guarantees quicker response and order processing times. **Alfagomma offers custom designs for unique requirements. For specific needs please contact your local Alfagomma representative.**

Arm B flange

Standard	
EN1092-1 PN6	BB
EN1092-1 PN10	BC
EN1092-1 PN16	BD
ASA #150	BE
ASA #300	BH
SAE 3000 (up to 4")	33
UNAV9285 PN10	B9
VG 95959-1	V9
VG 85515-2	V8

Arm B flange

mm	in	DN
40,0	1 1/2"	040
50,0	2"	050
65,0	2 1/2"	065
80,0	3"	080
100,0	4"	100
125,0	5"	125
150,0	6"	150
200,0	8"	200
250,0	10"	250

Fittings

Material	
AISI 316	30
Aluminum Bronze	70

Hose protection

Anti-flame insulation cover	
No	N
Yes	R

Arm B length

mm
XXXX

Arm B flange

Shape	
Straight fixed	1
Straight swivel	L
Elbow fixed	9
Elbow swivel	T

O-Ring

Material	
NBR	N
FKM	I
EPDM	E

Accessories

Support plate kit	
No	0
Yes	1

0	9	5	0
---	---	---	---

B	E
---	---

L

1	5	0
---	---	---

7	0
---	---

N

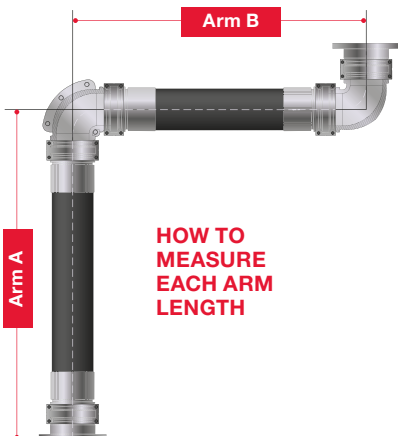
R

1

ARM B

MATERIALS

OTHER



HOW TO MEASURE EACH ARM LENGTH

Enquires and orders should be submitted to your nearest Alfagomma branch. You can find the full list on: www.alfagomma.com

// ALFATRAKA HOSE MANAGEMENT SYSTEM

AlfaTraka is a cloud-based hose assembly tracking system available to all customers worldwide, and developed to maintain and prevent hose assembly break downs.

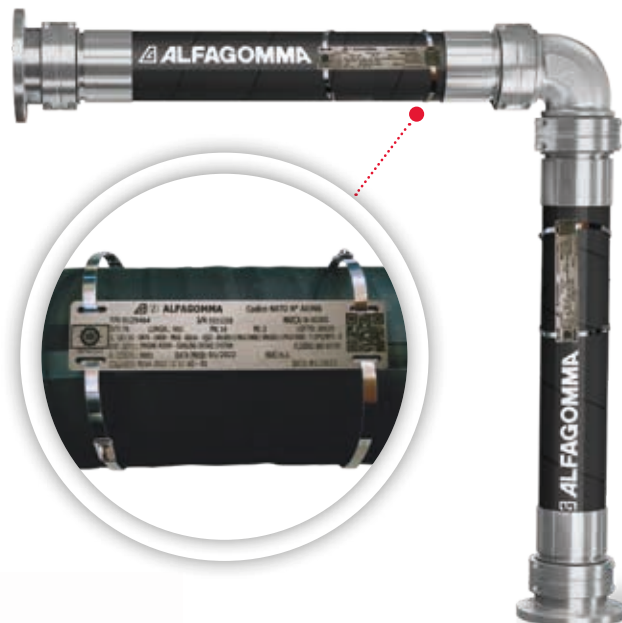
ALFATRAKA HELPS TO SUPPORT PARTNERS' HOSE MANAGEMENT PLAN AND IT CAN ASSIST WITH

- Regularly reviewing the life cycle and safety of your hose assembly
- Tracing the components, assembly, and installation of your hose assembly and fittings
- Making informed and safe decisions utilizing the service schedule function
- Conforming with statutory requirements and best industry practices
- Setting up a range of automated tasks with flags and reminders

ALFATraka

The data relating to the assembly is uploaded to AlfaTraka in the workshop. All of the **single product information is available from a label placed on the assembly** which includes the hose assembly QR code.

For more info visit: www.alfatraka.com



The AlfaTraka application (APP) is available for smart devices and can be found in the Google Play Store for Android devices and the APP Store for iOS devices.

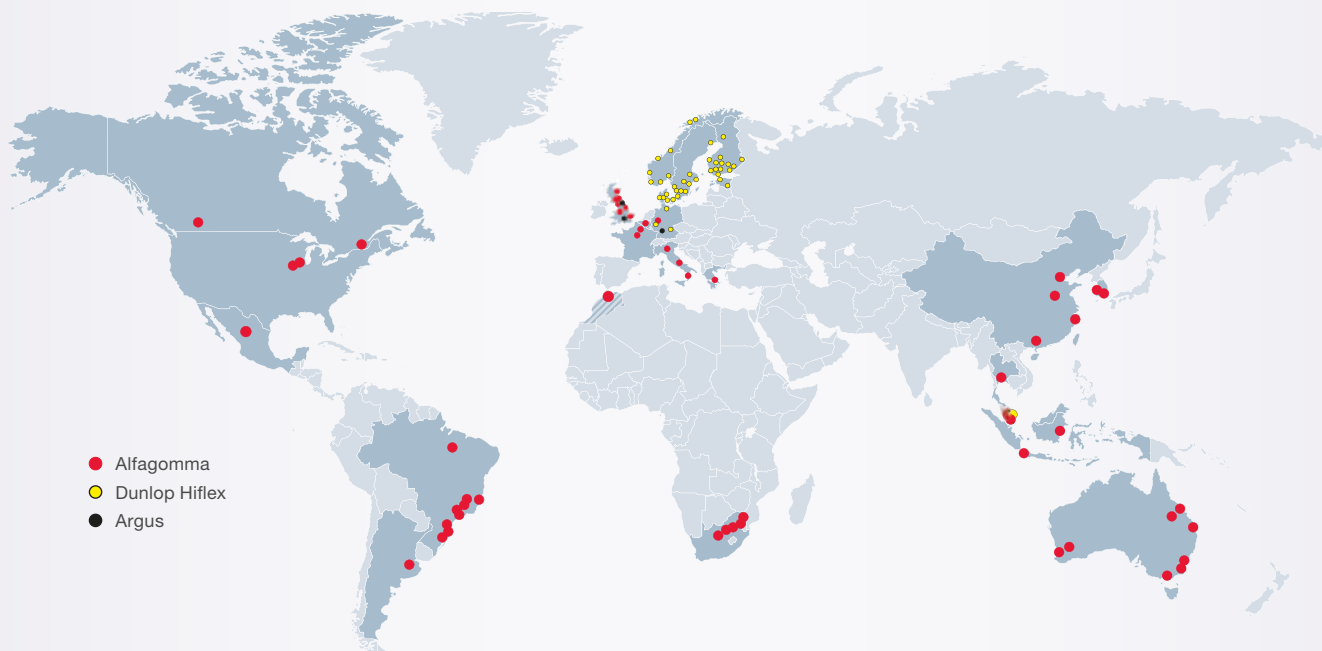


// GLOBAL PRESENCE & LOCAL LOGISTIC SUPPORT

Facing and overcoming the market's daily challenges requires experience, infrastructure, cutting-edge technology and the ability to manage complex systems.

Alfagomma offers innovative customised solutions from design through to repair and maintenance on a global scale, with manufacturing plants and facilities spread over 5 continents guaranteeing local operational and logistic support.

THE ALFAGOMMA GROUP



- EUROPE:** Italy, Belgium, France, Germany, Greece, United Kingdom, Denmark, Estonia, Finland, Norway, Sweden.
- ASIA-PACIFIC:** Australia, China, Indonesia, Malaysia, Singapore, South Korea, Thailand.
- AMERICAS:** Canada, United States of America, Mexico, Brazil, Argentina.
- AFRICA:** Morocco, South Africa.

ALFAGOMMA // **DUNLOPHIFLEX** // **HIFLEX** // **ARGUS**

// NOTES

Lined area for notes, consisting of multiple horizontal dotted lines.

THE ALFAGOMMA GROUP

ALFAGOMMA

ARGENTINA – Buenos Aires
Moreno Store Center
Belisario Roldán 2616 - CP. 1744
La Reja - Bs. As.
+54 (11) 5365-6062/6063

AUSTRALIA – Sydney
50 Honeycomb Drive
Eastern Creek
Sydney, NSW 2766
+61 (2) 98 53 09 00
sydney@alfagomma.com.au

BELGIUM & NETHERLANDS – Benelux
Koeweideblock 4/D3
1785 Merchtem
+32 (0)52 509 747
info.benelux@alfagomma.com

BRAZIL – Guaranésia
Rua Felice Gennasio 401
Distrito Indl. Dr. Firmino Rocha de Freitas
37810-000 - Guaranésia, MG - Brasil
+55 (35) 35 55 0408
contato@alfagomma.com.br

CANADA – Montreal
6550 Abrams
St. Laurent, Montreal
Quebec H4S 1Y2
+1 (514) 33 35 577
info@alfagomma.ca

CHINA – Ningbo
No. 296 Taiyuan Road
Investment Pioneering Centre
Jiangbei District
Ningbo, 315022
+86 (574) 88 15 72 88
alfagomma.china@alfagomma.com.cn

FRANCE – Villepinte
Le Sisle – Parc d'activité Paris Nord 2
23 Allée des Impressionnistes
93420 Villepinte
+33 (1) 48172121
agfrance.info@alfagomma.com

GERMANY – Herne
Friedrich der Grosse 10
44628 Herne
+49 (2323) 14 730
info.germany@alfagomma.com

GREECE – Athens
85 Kifissou Avenue
12241 Aigaleo, Athens
+30 (210) 41 19 909
alfagomma-hellas@ath.forthnet.gr

INDONESIA – Tigaraksa
JL. Raya Pemda Tigaraksa km. 4
No 34, Matagara
Tigaraksa, Tangerang 15720
+62 (21) 59 96 301
jakarta@alfagomma.co.id

ITALY – Vimercate
Via Torri Bianche 1
20871 Vimercate (MB)
+39 (039) 60 161
info@alfagomma.com

MALAYSIA – Pasir Gudang
Plo 405, Jalan Perak 4
81707 Pasir Gudang
Negeri Johor Darul Takzim
+60 (7) 25 72 000
alfagomma@alfagomma.com.my

MEXICO – Torreón
Av. Industria de la transformacion
Parque Pymes 585
27400 Torreón, Coahuila
+52 8713125026
alfagomma.mexico@alfagomma.com

SINGAPORE
14 Tuas Ave 11
Singapore 639080
+65 6360 9000
alfagomma@alfagomma.com.sg

SOUTH AFRICA – Johannesburg
17 Quark Crescent Linbro Business Park
Sandton 2065
+27 (11) 20 10 900
alfagomma@alfagomma.co.za

SOUTH KOREA – Hwasung
15 Julteo Gil
Yangkam-Myun, Hwasung-Si
Kyungki-Do 18630
+82 (31) 35 28 671
alfagomma@alfagomma.co.kr

UNITED KINGDOM – Haydock
43 Wilcock Road
Old Boston Trading Estate Haydock
St. Helens WA11 9TG
+44 (1942) 40 76 80
haydock.sales@alfagomma.com

UNITED STATES OF AMERICA – Burlington
3520 West Avenue
IA 52601 Burlington
+1 (319) 75 89 224
info@alfagomma.us

DUNLOPHIFLEX

DENMARK – Copenhagen
Vallensbaekvej 24,
2605 Brøndby Copenhagen
+45 (43) 240400
info@dunlophiflex.dk

ESTONIA – Tallin
Läike tee 32/1 - Peetri alevik,
Rae vald - 75312 Harjumaa (Tallinn)
Tel: +372 (0) 605 4900
tallinn@dunlophiflex.ee

FINLAND – Pirkkala
Jasperintie 320
33960 Pirkkala
+358 (207) 625 700
info@dunlophiflex.fi

NETHERLANDS – Deventer
Hunneparkade 86
7418 BT Deventer
+31 (570) 66 05 70
info@dunlophiflex.nl

NORWAY – Oslo
Stanseveien 27
Pb. 174 Kalbakken
0903 Oslo
+47 (23) 33 86 00
post@dunlophiflex.no

SWEDEN – Halmstad
Kistinge Industriområde
Seldonsvagen 2
30180 Halmstad
+46 (104) 14 44 04
halmstad@dunlophiflex.se

ARGUS

GERMANY – Ettlingen
Pforzheimer Str. 126
76275 Ettlingen
+49 (7243) 50 550
info@argus-fluidtechnik.de

UNITED KINGDOM – Salisbury
Telford Road
Salisbury, Wiltshire SP2 7PH
+44 (1722) 42 05 90
sales@hiflex-europe.com



HEADQUARTER
Alfagomma SpA
Via Torri Bianche 1
20871 Vimercate (MB) Italy
marketing@alfagomma.com
www.alfagomma.com