



**ALFAGOMMA**

**CONCRETE**





## // HOSE

Alfagomma concrete pumping hose range guarantees outstanding performance and maximum safety in heavy duty applications, such as placement, tunnelling and piling. All hoses are specially designed to satisfy the most demanding conditions on construction sites:

- ▲ Excellent tube and cover abrasion resistance
- ▲ 170 bar (2500 psi), 200 bar (3000 psi), and 250 bar (3750 psi) minimum burst pressure options
- ▲ Lightweight construction
- ▲ Good flexibility
- ▲ High structural stability which avoids kinking, elongation and vibration while in operation
- ▲ Great vacuum resistance during cleaning
- ▲ Electrical conductivity along tube and cover
- ▲ Brand pictograms to highlight application hazards and safety warnings



## // 74SAA

**Concrete pumping 85 bar (1275 psi) - Heavy duty - Textile reinforced****Tube:** black conductive NR - abrasion resistant.**Reinforcement:** high tensile textile cords.**Cover:** black conductive SBR/NR - abrasion and ozone resistant.**Application:** high pressure concrete pumping. Special lightweight construction.**Temperature:** -30 °C +80 °C (-22 °F +176 °F)

ID (mm)	ID (in)	OD (mm)	OD (in)	WP (bar)	WP (psi)	BP (bar)	BP (psi)	BR (mm)	BR (in)	Weight (kg/m)	Weight (lb/ft)
51,0	2"	71,0	2,80	85	1275	170	2500	255	10,04	2,170	1,46
63,0	2 1/2"	83,0	3,27	85	1275	170	2500	315	12,40	2,660	1,79
65,0	2 9/16"	85,0	3,35	85	1275	170	2500	325	12,80	3,190	2,15
76,0	3"	101,0	3,98	85	1275	170	2500	380	14,96	3,700	2,49
102,0	4"	128,0	5,04	85	1275	170	2500	510	20,08	4,940	3,32



## // 740AA

**Concrete pumping 100 bar (1500 psi) - Heavy duty - Steel reinforced****Tube:** black conductive NR - abrasion resistant.**Reinforcement:** high tensile steel cords.**Cover:** black conductive SBR/NR - abrasion and ozone resistant.**Application:** high pressure concrete pumping.**Temperature:** -30 °C +80 °C (-22 °F +176 °F)

ID (mm)	ID (in)	OD (mm)	OD (in)	WP (bar)	WP (psi)	BP (bar)	BP (psi)	BR (mm)	BR (in)	Weight (kg/m)	Weight (lb/ft)
51,0	2"	69,0	2,72	100	1500	200	2900	255	10,04	2,670	1,80
63,0	2 1/2"	85,0	3,35	100	1500	200	2900	315	12,40	3,580	2,41
65,0	2 9/16"	87,0	3,43	100	1500	200	2900	335	13,19	3,650	2,46
76,0	3"	100,0	3,94	100	1500	200	2900	380	14,96	4,640	3,12
90,0	3 1/2"	116,0	4,57	100	1500	200	2900	450	17,72	5,600	3,77
102,0	4"	126,0	4,96	100	1500	200	2900	510	20,08	7,400	4,98
127,0	5"	149,0	5,87	100	1500	200	2900	635	25,00	8,880	5,97
127,0	5"	153,0	6,02	100	1500	200	2900	635	25,00	9,960	6,70
152,0	6"	184,0	7,24	100	1500	200	2900	760	29,92	14,040	9,44



## // 741AA

**Concrete pumping 100 bar (1500 psi) - Extra service - Steel reinforced****Tube:** black conductive NR - abrasion resistant.**Reinforcement:** high tensile steel cords.**Cover:** black conductive SBR/NR - abrasion and ozone resistant.**Application:** high pressure concrete pumping. Designed for long service life in heavy duty applications.**Temperature:** -30 °C +80 °C (-22 °F +176 °F)

ID (mm)	ID (in)	OD (mm)	OD (in)	WP (bar)	WP (psi)	BP (bar)	BP (psi)	BR (mm)	BR (in)	Weight (kg/m)	Weight (lb/ft)
51,0	2"	69,0	2,72	100	1500	200	2900	255	10,04	2,650	1,79
63,0	2 1/2"	85,0	3,35	100	1500	200	2900	315	12,40	3,850	2,59
65,0	2 9/16"	87,0	3,43	100	1500	200	2900	335	13,19	3,920	2,64
76,0	3"	100,0	3,94	100	1500	200	2900	380	14,96	5,090	3,43
102,0	4"	128,0	5,04	100	1500	200	2900	510	20,08	7,820	5,26
127,0	5"	155,0	6,10	100	1500	200	2900	635	25,00	10,460	7,03

**ALFAGOMMA** ITALY //741// MAX WP 100 bar (1500 psi) CONCRETE PUMPING EXTRA SERVICE Ω ⚠ ⚙ ⚙ ⚙ ⚙

## // 733AA

**Piling rig 125 bar (1875 psi) - Steel reinforced****Tube:** black conductive NR - abrasion resistant.

Red overlaying layer for wear detection.

**Reinforcement:** high tensile steel cords.**Cover:** black conductive SBR/NR - abrasion and ozone resistant.**Application:** high pressure concrete pumping. Specially designed for piling rig applications.**Temperature:** -30 °C +80 °C (-22 °F +176 °F)

ID (mm)	ID (in)	OD (mm)	OD (in)	WP (bar)	WP (psi)	BP (bar)	BP (psi)	BR (mm)	BR (in)	Weight (kg/m)	Weight (lb/ft)
127,0	5"	156,0	6,14	125	1820	250	3630	635	25,00	12,000	8,07

**ALFAGOMMA** ITALY //733// MAX WP 125 bar (1875 psi) CONCRETE PUMPING HIGH PRESSURE Ω ⚠ ⚙ ⚙ ⚙ ⚙

## // FITTINGS

Alfagomma integrated designed and tested high-grade steel fittings for our concrete hose range ensures maximum operating safety.

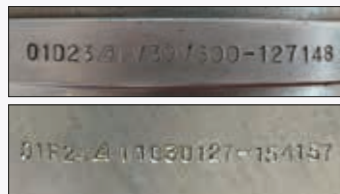
Available in various connection types, they meet different market requirements. The technical department also develops customized coupling solutions compliant with concrete pump manufacturer standards.

- ▲ One piece concrete couplings, with pre-crimped ferrule for secure connection of the specific hose
- ▲ Hardened steel insert for high abrasion resistance
- ▲ Full flow couplings minimises the risk of blockages
- ▲ Full traceability of couplings thanks to the alphanumeric code marked on insert and ferrule during production
- ▲ Protective plastic cap on coupling



**ASSEMBLY CROSS SECTION**

Full flow pathway: no interference or build up of product conveyed.



**FULL TRACEABILITY**

Alphanumeric code marked on insert and ferrule.



### ..... WIDE COUPLING RANGE .....

Hose ID		Coupling size (in)	VICTAULIC STYLE	SHOULDERED STYLE	CALIFORNIA HD STYLE	SCHWING STYLE Male/ Female	THREADED STYLE	
(in)	(mm)						BSPT/ NPT Male	BSPP Fixed Female
2"	51	2"	•	•	•		•	•
		3"	•					
2 1/2"	63	2 1/2"			•			
		3"	•	•				
2 9/16"	65	3"	•	•				
		3"	•	•	•		•	
3"	76	3 1/4"	•				•	
		4 1/2"		•				
3 1/2"	90	4"		•				
		4 1/2"		•				
4"	102	4"	•	•	•	•		
		4 1/2"	•					
5"	127	5"	•		•	•		
		5 1/2"	•					
6"	152	6"	•			•		

## // ACCESSORIES

Alfagomma provides different accessories for the specific requirements of concrete pumping applications.

### CONNECTION CLAMPS AND GASKETS

- ▲ Different types for Victaulic and California Heavy Duty style couplings, from 2" up to 6":



- **Connection clamps with fixed lever,**  
for a fixed and unmodifiable clamping closure






- **Connection clamps with adjustable snap lever:**  
thanks to the presence of a "screw" inside its body, the locking mechanism can be adjusted and loosened by the operator




- ▲ Tested working pressure from 85 to 150 bar, with a safety factor 2:1
- ▲ Produced in zinc plated forged steel and supplied with profiled rubber gasket
- ▲ Safety pins in compliance with CE EN 12001 applied to prevent accidental opening

### SPONGE CLEANING BALLS

- ▲ Orange synthetic sponge balls and cylinders in soft density natural rubber.  
Various diameters available for cleaning of pump arms and distribution pipelines at the end of each concrete pumping cycle.  
Sponge cylinders preferred for special applications due to their larger cleaning surface.



VICTAULIC STYLE CONNECTION CLAMPS		
FIXED lever	ADJUSTABLE snap lever	EPDM rubber gasket
size 2" - 6"	size 3" - 6"	standard profile
		

CALIFORNIA HEAVY DUTY STYLE CONNECTION CLAMPS		
FIXED lever	ADJUSTABLE snap lever	SBR rubber gasket
size 2" - 5"	size 2" - 5"	shaped profile
		

## // INTEGRATED CONCRETE SYSTEM

Alfagomma guarantees a specialized integrated system for concrete pumping applications.

**The high performance hoses and premium quality couplings are designed, manufactured and assembled in the Alfagomma factories to ensure complete quality control and reliability.**

Alfagomma assembly centers dealing in the concrete business **grant fast delivery times** thanks to **stock availability** of all components, thus complying with the different **customers' requirements**. **Full traceability of all the assemblies** is granted by the ferrule marking during assembly process.

The assemblies are delivered with protective plastic caps on the fittings to avoid damage during transport.

### ASSEMBLY PROCEDURE



**1** One piece coupling: easy and fast picking and crimping



**2** Ferrule marking for full traceability



**3** Hose thickness measurement is taken to identify the correct calibrated crimping diameter



**4** Coupling insertion on the hose



**5** Crimping operation



**6** Hose assembly



**HEADQUARTER**  
**ALFAGOMMA SPA**  
Via Torri Bianche 1  
20871 Vimercate (MB) Italy  
[marketing@alfagomma.com](mailto:marketing@alfagomma.com)  
[www.alfagomma.com](http://www.alfagomma.com)